

Feed-through terminal, Screw connection, Mounting type: Mounting rail TS 35/7.5 and TS 32, Rated cross-section: 4 mm<sup>2</sup>, Width: 6 mm, Colour: Beige

### Business data

|  |                       |
|--|-----------------------|
| Article number                             | 1211.2                |
| Article name                               | RK 2,5-4/ZRL BG       |
| GTIN (EAN)                                 | 4044211028558         |
| Packaging unit                             | 100                   |
| Quantity unit                              | PC                    |
| Weight per piece (not including packaging) | 13.2 g                |
| Weight per piece (including packaging)     | 13.97 g               |
| Unit of weight                             | G                     |
| Customs number                             | 85369010              |
| Country of origin                          | CZ                    |
| Prio-Article                               | 1211.2                |
| Product description                        | Feed-through terminal |

### Technical data

#### Dimensions

|                  |         |
|------------------|---------|
| Length           | 67 mm   |
| Width            | 6 mm    |
| Height TS 35/7.5 | 47 mm   |
| Height TS 32     | 51.5 mm |

#### Ratings

|   |                   |
|---|-------------------|
| Rated voltage                                   | 500 V             |
| Rated current                                   | 24 A              |
| Rated cross-section                             | 4 mm <sup>2</sup> |
| Rated impulse voltage                           | 6 kV              |
| Overvoltage category                            | III               |
| Contamination degree                            | 3                 |
| Maximum power dissipation for nominal condition | 0.77 W            |

#### Connection data

|  |                     |
|--|---------------------|
| Connection principle                                     | Screw connection    |
| Connection position                                      | Lateral             |
| Connections  | 4                   |
| Number of terminals per level                            | 2                   |
| Number of levels   | 1                   |
| Wire cross-section single-core (rigid) / stranded, min.  | 0.2 mm <sup>2</sup> |
| Wire cross-section single core (rigid)/stranded, max.    | 4 mm <sup>2</sup>   |
| Wire cross-section stranded, min.                        | 0.2 mm <sup>2</sup> |
| Wire cross-section stranded, max.                        | 4 mm <sup>2</sup>   |
| Wire cross-section stranded with wire-end ferrules, min. | 0.2 mm <sup>2</sup> |
| Wire cross-section stranded with wire-end ferrules, max. | 2.5 mm <sup>2</sup> |
| Wire cross-section AWG, min.                             | 22                  |
| Wire cross-section AWG, max.                             | 12                  |
| Stripping length   | 9 mm                |
| Screw head   | Slotted             |
| Screw threading  | M 3                 |
| Tightening torque, min.                                  | 0.5 Nm              |
| Tightening torque, max.                                  | 1 Nm                |

---

### Technical data

---

#### Materials

|                           |               |
|---------------------------|---------------|
| Insulation housing        | Polyamide 6.6 |
| Flammability class UL 94  | V-2           |
| Working temperature, min. | -40 °C        |
| Working temperature, max. | 105 °C        |

#### Further technical data

|                                     |                                   |
|-------------------------------------|-----------------------------------|
| Mounting type                       | Mounting rail TS 35/7.5 and TS 32 |
| Gauge plug acc. to EN 60 947-1      | A4                                |
| Number of cross-connection channels | 1                                 |
| End plate required                  | ✓                                 |
| Number of test pick-off options     | 1                                 |

#### Environmental Product Compliance

|                                |            |
|--------------------------------|------------|
| REACH Conform                  | Yes        |
| REACH Reference date           | 2022-06-10 |
| REACH Candidate Substance Note | No         |
| RoHS Conform                   | Yes        |

### Approvals

#### Standards and regulations

|              |                |
|--------------|----------------|
| EAC approval | TR ZU 004/2011 |
|--------------|----------------|

|                      |     |
|----------------------|-----|
| EAC approval granted | yes |
|----------------------|-----|

#### cUL Recognized

|              |              |
|--------------|--------------|
| cUL approval | C22.2 No 158 |
|--------------|--------------|

|                               |       |
|-------------------------------|-------|
| cUL Usegroup B: rated voltage | 600 V |
|-------------------------------|-------|

|                               |      |
|-------------------------------|------|
| cUL Usegroup B: rated current | 30 A |
|-------------------------------|------|

|                               |       |
|-------------------------------|-------|
| cUL Usegroup C: rated voltage | 600 V |
|-------------------------------|-------|

|                               |      |
|-------------------------------|------|
| cUL Usegroup C: rated current | 30 A |
|-------------------------------|------|

|  |    |
|--|----|
| cUL wire cross-section single-core (rigid) AWG, min. | 22 |
|--|----|

|  |    |
|--|----|
| cUL wire cross-section single-core (rigid) AWG, max. | 10 |
|--|----|

|   |    |
|---|----|
| cUL wire cross-section stranded AWG, min. | 22 |
|---|----|

|   |    |
|---|----|
| cUL wire cross-section stranded AWG, max. | 10 |
|---|----|

|            |      |
|------------|------|
| cUL torque | 7 Nm |
|------------|------|

|                   |    |
|-------------------|----|
| cUL wire material | Cu |
|-------------------|----|

|                 |        |
|-----------------|--------|
| cUL File Number | E95701 |
|-----------------|--------|

|                |   |
|----------------|---|
| cUL Recognized | 1 |
|----------------|---|

#### KEMA KEUR approval

|                    |                   |
|--------------------|-------------------|
| KEMA KEUR approval | EN 60947-7-1:2009 |
|--------------------|-------------------|

|                            |     |
|----------------------------|-----|
| KEMA KEUR approval granted | yes |
|----------------------------|-----|

|                    |       |
|--------------------|-------|
| KEMA rated voltage | 800 V |
|--------------------|-------|

|                    |      |
|--------------------|------|
| KEMA rated current | 32 A |
|--------------------|------|

|                            |      |
|----------------------------|------|
| KEMA rated impulse voltage | 6 kV |
|----------------------------|------|

|   |                     |
|---|---------------------|
| KEMA wire cross-section single core (rigid), min. | 0.2 mm <sup>2</sup> |
|---|---------------------|

|   |                   |
|---|-------------------|
| KEMA wire cross-section single-core (rigid), max. | 6 mm <sup>2</sup> |
|---|-------------------|

|  |                     |
|--|---------------------|
| KEMA wire cross-section stranded, min. | 0.2 mm <sup>2</sup> |
|--|---------------------|

|  |                   |
|--|-------------------|
| KEMA wire cross-section stranded, max. | 6 mm <sup>2</sup> |
|--|-------------------|

|                   |        |
|-------------------|--------|
| KEMA torque, min. | 0.5 Nm |
|-------------------|--------|

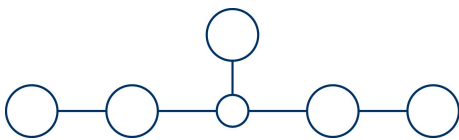
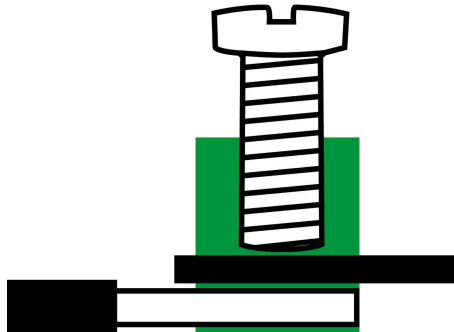
|                   |      |
|-------------------|------|
| KEMA torque, max. | 1 Nm |
|-------------------|------|

### Approvals

#### UL Recognized

|   |         |
|---|---------|
| UL approval   | UL 1059 |
| UL Usegroup B: rated voltage                        | 600 V   |
| UL Usegroup B: rated current                        | 30 A    |
| UL Usegroup C: rated voltage                        | 600 V   |
| UL Usegroup C: rated current                        | 30 A    |
| UL wire cross-section single-core (rigid) AWG, min. | 22      |
| UL wire cross-section single-core (rigid) AWG, max. | 10      |
| UL wire cross-section stranded AWG, min.            | 22      |
| UL wire cross-section stranded AWG, max.            | 10      |
| UL torque   | 7 Lb In |
| UL wire material                                    | Cu      |
| UL factory wiring                                   | 1       |
| UL field wiring                                     | 1       |
| UL File Number                                      | E95701  |
| UL Recognized                                       | 1       |

### Media



**M3**



**EAC**

### Accessories

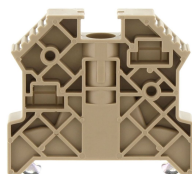
#### End plate



End plate, Width: 1.5 mm, Colour: Beige

| Article number | Article name | GTIN (EAN)    | Packaging unit |
|----------------|--------------|---------------|----------------|
| <u>2575.2</u>  | AP 2,5/RL BG | 4044211053680 | 50             |

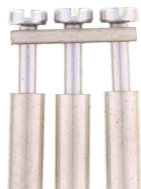
#### End stop



End stop, Mounting type: Mounting rail TS 35/7.5, Width: 9.5 mm, Colour: Beige

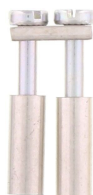
| Article number | Article name  | GTIN (EAN)    | Packaging unit |
|----------------|---------------|---------------|----------------|
| <u>2828.0</u>  | ES 35/K/ST BG | 4044211055547 | 50             |

#### Cross-connector



Cross-connector, No. of poles: 3, Mounting type: Can be screwed on, Width: 17 mm, Rated cross-section: 4 mm<sup>2</sup>, Colour: natural

| Article number | Article name | GTIN (EAN)    | Packaging unit |
|----------------|--------------|---------------|----------------|
| <u>2020.0</u>  | Q 3          | 4044211048235 | 50 ST          |



Cross-connector, No. of poles: 2, Mounting type: Can be screwed on, Width: 10.9 mm, Rated cross-section: 4 mm<sup>2</sup>, Colour: natural

| Article number | Article name | GTIN (EAN)    | Packaging unit |
|----------------|--------------|---------------|----------------|
| <u>2019.0</u>  | Q 2          | 4044211048228 | 50 ST          |



Cross-connector, No. of poles: 4, Mounting type: Can be screwed on, Width: 23.1 mm, Rated cross-section: 4 mm<sup>2</sup>, Colour: natural

| Article number | Article name | GTIN (EAN)    | Packaging unit |
|----------------|--------------|---------------|----------------|
| <u>2021.0</u>  | Q 4          | 4044211048242 | 20 ST          |

## 1211.2 RK 2,5-4/ZRL BG

### Cross-connector



Cross-connector, No. of poles: 10, Mounting type: Can be screwed on, Width: 59.7 mm, Rated cross-section: 4 mm<sup>2</sup>, Colour: natural

| Article number | Article name | GTIN (EAN)    | Packaging unit |
|----------------|--------------|---------------|----------------|
| <u>2022.0</u>  | Q 10         | 4044211048259 | 10 ST          |

### Quick marking



Terminal marker / Pocket Maxicard, Length: 5 mm, Width: 6 mm, Colour: White

| Article number | Article name   | GTIN (EAN)    | Packaging unit |
|----------------|----------------|---------------|----------------|
| <u>4702.7</u>  | PMC SB 6/50 WH | 4044211089986 | 500 ST         |

### Insulation plate



Insulation plate, Colour: Beige

| Article number | Article name | GTIN (EAN)    | Packaging unit |
|----------------|--------------|---------------|----------------|
| <u>2003.2</u>  | TRS 1 BG     | 4044211048068 | 100            |

### Screwdriver



Screwdriver with bare blade, Colour: Black-grey

| Article number | Article name | GTIN (EAN)    | Packaging unit |
|----------------|--------------|---------------|----------------|
| <u>1086.0</u>  | SDB 0,6x3,5  | 4044211014797 | 1 ST           |

### Test adapters



Test adapter, Length: 37.3 mm, Pitch size: 6 mm, Colour: Beige

| Article number | Article name | GTIN (EAN)    | Packaging unit |
|----------------|--------------|---------------|----------------|
| <u>2813.0</u>  | TA 6/1/ST    | 4044211055400 | 10 ST          |