

# Insulating wall-mounting enclosures

## Introduction

### > Monobloc wall-mounting enclosure

- made from polyester reinforced with fibreglass, moulded by hot compression.
- Degree of protection IP66,
- Impact resistance IK10 for the plain doors and surfaces and IK08 for the glazed doors of the polyester versions,
- UL certification and NEMA classification 4x and 13 for the polyester wall-mounting enclosures,
- Total insulation to produce class II units,
- Complies with RoHS and REACH Directives

P1237702-32



#### Service life

High resistance to corrosion in harsh environments, maintaining its mechanical properties and insulation.

PB501327-40



#### Easy

- Door easily reversible by turning it over.
- Opening to 120° or 180°.
- Easy machining with no corrosion.
- Lightness.
- Polyamide hinge pin, easily removable and captive.

PB501325-95



#### Smart

- Notches for easy fixing of DIN rails.
- Grid pattern on the rear of the door for marking the machining operations.

PB501325-60



This range can be configured according to your needs

4 different services available:



Assemble to order



Mounting of standard accessories



Painting

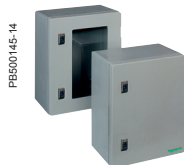


Machining

See page 450 for details or consult our web site [www.schneider-electric.com](http://www.schneider-electric.com)

# Insulating wall-mounting enclosures

## Characteristics



Characteristics	ABS/PC wall-mounting enclosures	Polyester wall-mounting enclosures
	<ul style="list-style-type: none"> <li>■ Monobloc wall-mounting enclosure.</li> <li>■ Version with transparent polycarbonate door.</li> <li>■ Closes with a 3-mm double-bar lock.</li> <li>■ Door opening: 180°.</li> <li>■ Temperature range: -35°C...+90°C.</li> </ul>	<ul style="list-style-type: none"> <li>■ Monobloc wall-mounting enclosure.</li> <li>■ Version with transparent tempered-glass door.</li> <li>■ Closes with two 3-mm double-bar locks.</li> <li>■ Door opening angle: 120°.</li> <li>■ Grid pattern with a pitch of 50 mm on the back of the door.</li> </ul>
		<ul style="list-style-type: none"> <li>■ Monobloc wall-mounting enclosure.</li> <li>■ Version with transparent tempered-glass door.</li> <li>■ Locking device outside the sealed area, guaranteeing the tightness of IP66 over time.</li> <li>■ Locking system:                             <ul style="list-style-type: none"> <li>□ enclosure height ≤ 847 mm: 2 locks with double-bar insert or 1 handle with key lock and 3-point closure,</li> <li>□ enclosure height 1056 mm: 1 lock with double-bar insert and 4-point closure.</li> </ul> </li> <li>■ Door opening angle: 180°.</li> <li>■ Bosses for accessory-fixing inserts: M6 inside the enclosure, M5 in the door for enclosure heights of 430 and 530 mm, M6 in the door for enclosure heights ≥ 647 mm.</li> <li>■ Grid pattern with a pitch of 25 mm on the back of the door.</li> </ul>
Material	ABS/PC	Polyester reinforced with fibreglass, moulded by hot compression
Temperature range - Polyester parts	-	-50°C ... +150°C
Temperature range - Gasket	-35°C ... +90°C	
Colour	RAL 7032 grey*	
Ingress protection rating	IP66 according to IEC 60529	
Mechanical protection rating	<ul style="list-style-type: none"> <li>■ IK10 (20 joules) plain door - IEC 62262</li> <li>■ IK08 (5 joules) glazed door</li> </ul>	
Certifications	<ul style="list-style-type: none"> <li>■ IEC 62208</li> <li>■ Marine</li> </ul>	<ul style="list-style-type: none"> <li>■ IEC 62208</li> <li>■ Marine</li> <li>■ UL 508A - Nema type: 1, 2, 3, 3R, 3S, 4, 4X, 5, 12, 12K and 13</li> </ul>
Installation	<ul style="list-style-type: none"> <li>■ Direct fixing of symmetrical rails ref. <b>NSYCS200PLM</b> with plastic nuts ref. <b>NSYTCSPLM</b>, to be installed in the notches on the rear of the body, with a pitch of 25 mm</li> <li>■ Fixing of installation plates on the studs at the rear of the enclosure</li> </ul>	<ul style="list-style-type: none"> <li>■ Fixing of rear accessories on 4 M8 x 18 studs</li> </ul>
		<ul style="list-style-type: none"> <li>■ Fixing of rear accessories on 4 M8 studs, included in the standard supply</li> <li>■ Direct fixing of symmetrical rails ref. <b>NSYCS...PLM</b>, with plastic nuts, ref. <b>NSYTCSPLM</b>, to be installed in the notches on the rear of the body, with a pitch of 25 mm</li> </ul>

External dimensions (mm)			References of wall-mounting enclosures with door							
Height	Width	Depth	Plain (3)	Transparent	Plain (3)	Transparent	Plain (3)	Transparent	Plain (1)	Transparent (1)
308	255	160	-	-	NSYPLM3025P	NSYPLM3025T	-	-	-	-
310	215	160	NSYPLM32	NSYPLM32T	-	-	-	-	-	-
430	330	200	-	-	-	-	NSYPLM43	NSYPLM43T	NSYPLM43V	NSYPLM43TV
530	430	200	-	-	-	-	NSYPLM54	NSYPLM54T	NSYPLM54V	NSYPLM54TV
647	436	250	-	-	-	-	NSYPLM64	NSYPLM64T	NSYPLM64V	NSYPLM64TV
747	536	300	-	-	-	-	NSYPLM75	NSYPLM75T	NSYPLM75V	NSYPLM75TV
847	636	300	-	-	-	-	NSYPLM86	NSYPLM86T	NSYPLM86V	NSYPLM86TV
1056	852	350	-	-	-	-	NSYPLM108 (2)	NSYPLM108T (2)	-	-

(1) Wall-mounting enclosure with handle and lock with 3-point closure and key 1242 E delivered as standard.

(2) Wall-mounting enclosure with standard 5 mm double-bar lock and lock with 4-point closure.

(3) These enclosures are also available equipped with metallic or insulating mounting plates.

\* RAL 7035 from 2016.

External dimensions (mm)			Wall-mounting enclosures with plain door and mounting plate (4)							
Height	Width	Depth	Plain	Bakelite	Plain	Bakelite	Plain	Bakelite	Plain	Bakelite
308	255	160	-	-	NSYPLM3025P	NSYPLM3025B	-	-	-	-
310	215	160	NSYPLM32P	NSYPLM32B	-	-	-	-	-	-
430	330	200	-	-	-	-	NSYPLM43P	NSYPLM43B	NSYPLM43V	NSYPLM43TV
530	430	200	-	-	-	-	NSYPLM54P	NSYPLM54B	NSYPLM54V	NSYPLM54TV
647	436	250	-	-	-	-	NSYPLM64P	NSYPLM64B	NSYPLM64V	NSYPLM64TV
747	536	300	-	-	-	-	NSYPLM75P	NSYPLM75B	NSYPLM75V	NSYPLM75TV
847	636	300	-	-	-	-	NSYPLM86P	NSYPLM86B	NSYPLM86V	NSYPLM86TV
1056	852	350	-	-	-	-	-	NSYPLM108B	-	-

(4) Not mounted.