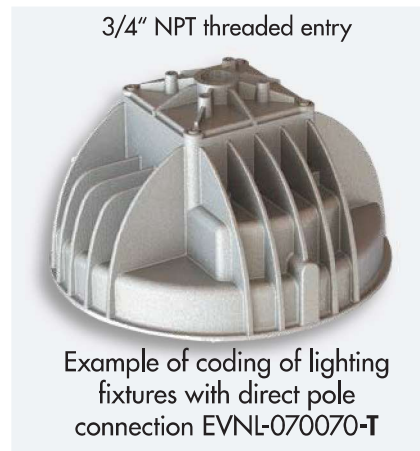
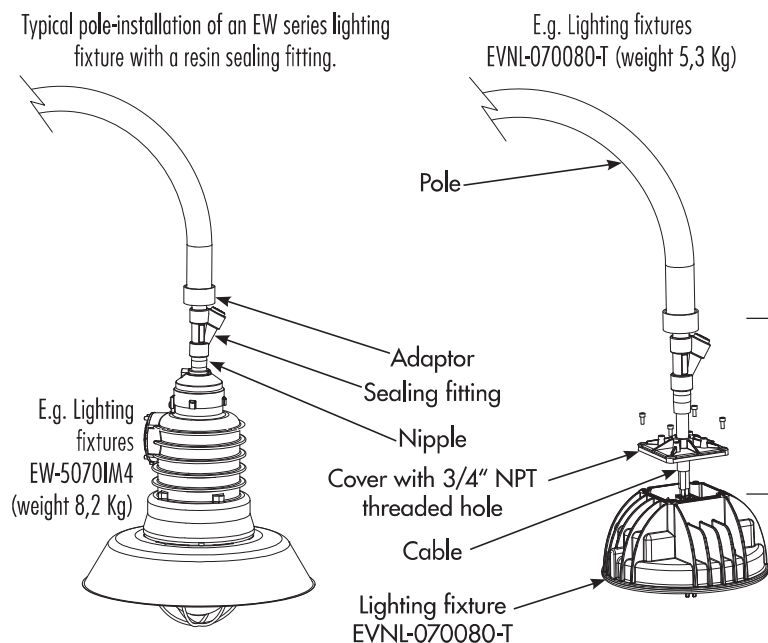


Installation and assembly methods

REPLACEMENT OF OLD LIGHTING FIXTURES POLE-MOUNTED

Using the lighting fixture with direct connection for pole mounting EVNL-...-T series, it is possible to replace the old lighting fixtures with 3/4" NPT or ISO 7/1 threaded entries.

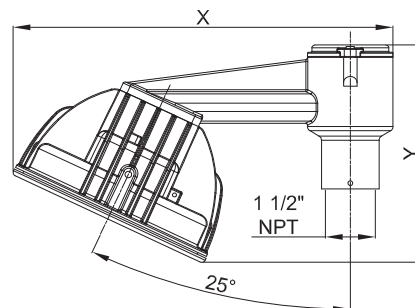


Note: it is necessary to preserve, during the installation, the IP protection degree of the terminal box using a sealing fitting.

Stanchion mounting with fixed orientation at 25°



Code	X	Y	Peso kg	mm
EVNL-060...-IX	372	215	3,5	372x170x215
EVNL-070...-IX	395	226	4,1	372x327x226
EVNL-080...-IX	419	242	5,2	351x351x242
EVNL-100...-IX	478	280	9,9	412x412x280



Transportable version EVNL-...-PS complete with cable 8 meters long, sockets model PY216B and plug model SPY216B.






To order the transportable lighting fixture without socket and plug, omit the S in the code: **EVNL-...-P**.

Weight (without socket):

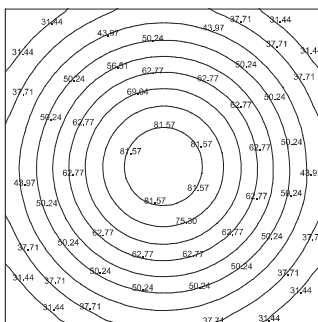
EVNL-060...-P	6,5 Kg
EVNL-070...-P	7,3 Kg
EVNL-080...-P	8,3 Kg
EVNL-100...-P	13,2 Kg

Photometric curves and specifications

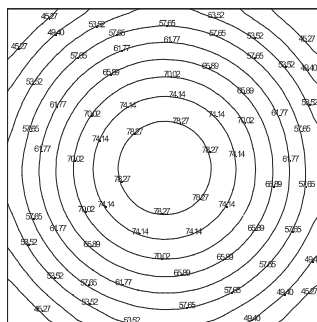
EVNL - Equivalence -

			
EVNL-060030 (30 W)	-	(70 W)	(70 W)
EVNL-060040 (40 W)	(125 W)	-	-
EVNL-070060 (70 W)	-	-	(150 W)
EVNL-070070 (70 W)	-	(150 W)	-
EVNL-070080 (80 W)	(250 W)	-	-
EVNL-080100 (100 W)	-	-	(250 W)
EVNL-080090 (90 W)	(400 W)	-	-
EVNL-100140 (140 W)	-	(250 W)	-
EVNL-100160 (160 W)	-	-	(400 W)
EVNL-100220 (400 W)	-	(400 W)	-
LED	Mercury	Sodium	Metal halide
Typical energy savings			

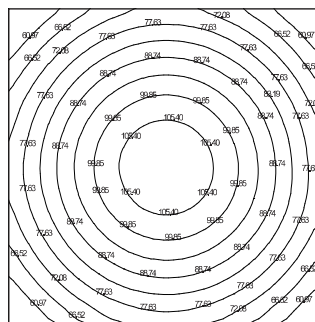
Floor lighting relating to **EVNL-060** expressed in lux in a room 5 m x 5 m with fixture at the centre at **3.5m** height.



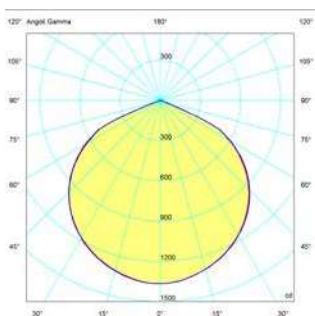
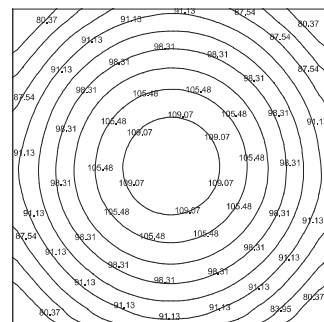
Floor lighting relating to **EVNL-070** expressed in lux in a room 5 m x 5 m with fixture at the centre at **5m** height.



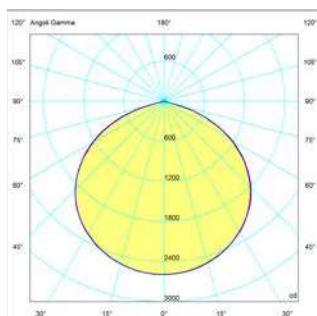
Floor lighting relating to **EVNL-080** expressed in lux in a room 5 m x 5 m with fixture at the centre at **5m** height.



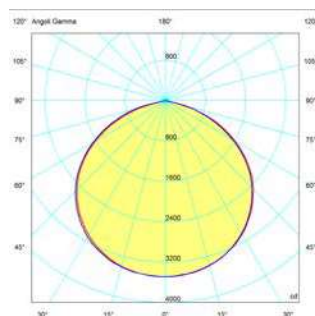
Floor lighting relating to **EVNL-100** expressed in lux in a room 5 m x 5 m with fixture at the centre at **7m** height.



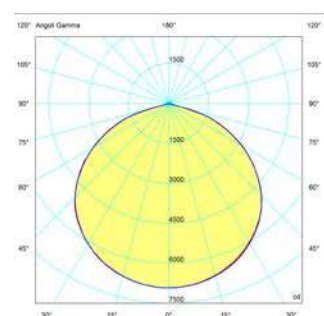
EVNL-060050
Luminous flux: 5170 lm



EVNL-070080
Luminous flux: 9468 lm



EVNL-080120
Luminous flux: 14233 lm



EVNL-100160
Luminous flux: 21189 lm

The lighting solution files for the design, planning and simulation of lighting levels in 2D-3D, rendering and ray-tracing are available from www.cortemgroup.com.

— = plane 90270
— = plane 0180