

wall mounting – horizontal or vertical mounting

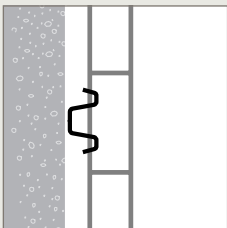
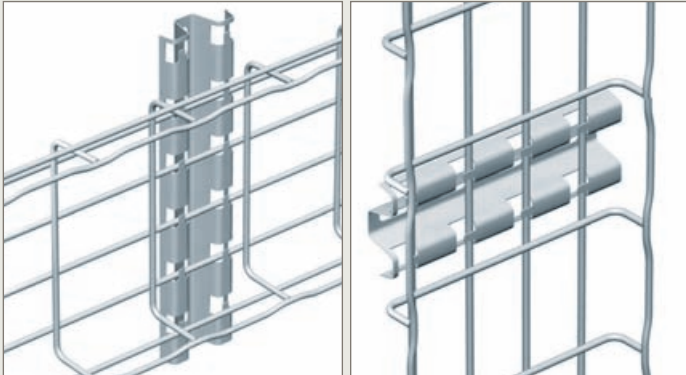
RCSN



■ RCSN – fast fix support rails

Use to fix 100 mm to 600 mm wide steel wire cable tray in 30 mm to 105 mm depths directly onto the wall. Can be used for horizontal and vertical mounting of cable tray runs. Can also be used for ceiling mounting (see. p. 71) and for floor mounting (see p. 78, 82) Incorporates slot and tab design for easy fixing. Supplied singly without fasteners

■ Installation



Mount directly onto wall using fasteners (not supplied) to run tray in a vertical or horizontal direction

■ Assembly



FAS
FAST ASSEMBLING SYSTEM

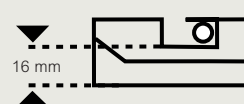


Fast assembling



Fixing without nuts and bolts

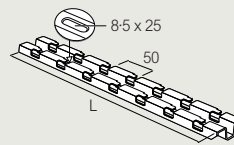
Slot base wires of the tray into the support rail and bend tabs with screwdriver to secure, as shown in the FAS diagram above



16 mm spacing from underside of base wire to wall

■ Dimensions and weights

↑↓ 30 → 105 mm ↔ 100 → 600 mm



Cat. Nos.	L mm	↓F↓ daN	Weight (kg)			
			GS	GC	304L	316L
RCSN150	150	100	0.16	0.17	–	0.16
RCSN200	200	100	0.23	0.23	–	0.22
RCSN300	300	100	0.33	0.36	–	0.33
RCSN400	400	100	0.38	0.49	–	0.45
RCSN500	500	100	0.54	0.61	–	0.59
RCSN550	550	100	0.63	0.65	–	–
RCSN600	600	100	0.67	0.70	–	0.69
RCSN1000	1 000	100	1.18	1.23	–	1.21
RCSN2000	2 000	100	2.20	2.42	2.30	2.30
RCSN3000	3 000	100	3.54	3.78	3.65	3.65

Please use Cat. No. when placing your order, see p. 24

All weights are given in Kilograms (kg)

Key :	GS Pre-galvanised	304L Stainless steel 304L
	GC Hot dip galvanised after manufacture	316L Stainless steel 316L

For detailed information related to finishes, refer to p. 116-117

All dimensions (mm) are nominal

→ For ceiling mounting : see p. 71

→ For floor mounting : see p. 78, 82