



CIRCUIT-BREAKER SIZE S0, FOR MOTOR PROTECTION, CLASS 10, A-REL. 1.4...2A, N-REL. 26A, SCREW TERMINAL, STANDARD SWITCHING CAPACITY

Figure similar

product brand name	SIRIUS
Product designation	circuit breaker
Design of the product	for motor protection

General technical data:

Active power loss total typical	6 W
Surge voltage resistance Rated value	6 000 V
Mechanical service life (switching cycles)	
• of the main contacts typical	100 000
Protection class IP	
• on the front	IP20
Equipment marking	
• acc. to DIN EN 61346-2	Q

Main circuit:

Number of poles for main current circuit	3
Adjustable response value current of the current-dependent overload release	1.4 ... 2 A
Operating voltage	
• Rated value	690 V
• at AC-3 Rated value maximum	690 V
Operating current	
• at AC-3	
— at 400 V Rated value	2 A
Operating frequency	
• at AC-3 maximum	15 1/h

Auxiliary circuit:	
Number of CO contacts	0
<ul style="list-style-type: none"> • for auxiliary contacts 	
Product expansion Auxiliary switch	Yes
Protective and monitoring functions:	
Trip class	CLASS 10
Maximum short-circuit current breaking capacity (Icu)	
<ul style="list-style-type: none"> • with AC at 240 V Rated value • with AC at 400 V Rated value • with AC at 500 V Rated value • with AC at 690 V Rated value 	100 kA 100 kA 100 kA 8 kA
Short-circuit:	
Design of the overcurrent release and short-circuit release	thermomagnetic
Installation/ mounting/ dimensions:	
mounting position	any
Mounting type	screw and snap-on mounting onto 35 mm standard mounting rail according to DIN EN 50022
Height	97 mm
Width	45 mm
Depth	96 mm
Required spacing	
<ul style="list-style-type: none"> • with side-by-side mounting <ul style="list-style-type: none"> — Backwards — at the side 	0 mm 0 mm
Connections/ Terminals:	
Product function	No
<ul style="list-style-type: none"> • removable terminal for auxiliary and control circuit 	
Type of electrical connection	
<ul style="list-style-type: none"> • for main current circuit • for auxiliary and control current circuit 	screw-type terminals screw-type terminals
Arrangement of electrical connectors for main current circuit	front side
Type of connectable conductor cross-section	
<ul style="list-style-type: none"> • for main contacts <ul style="list-style-type: none"> — solid — stranded — finely stranded with core end processing • for AWG conductors for main contacts 	2x (1 ... 2.5 mm ²), 2x (2.5 ... 6 mm ²) 2x (1 ... 2.5 mm ²), 2x (2.5 ... 6 mm ²) 2x (1 ... 2.5 mm ²), 2x (2.5 ... 6 mm ²) 2x (14 ... 10)
Safety related data:	

Protection against electrical shock	finger-safe
-------------------------------------	-------------

Mechanical data:

Size of the circuit-breaker	S0
-----------------------------	----






Ambient conditions:



Installation altitude at height above sea level maximum	2 000 m
---	---------

Ambient temperature	
• during operation	-20 ... +60 °C
• during storage	-50 ... +80 °C
• during transport	-50 ... +80 °C

Certificates/ approvals:

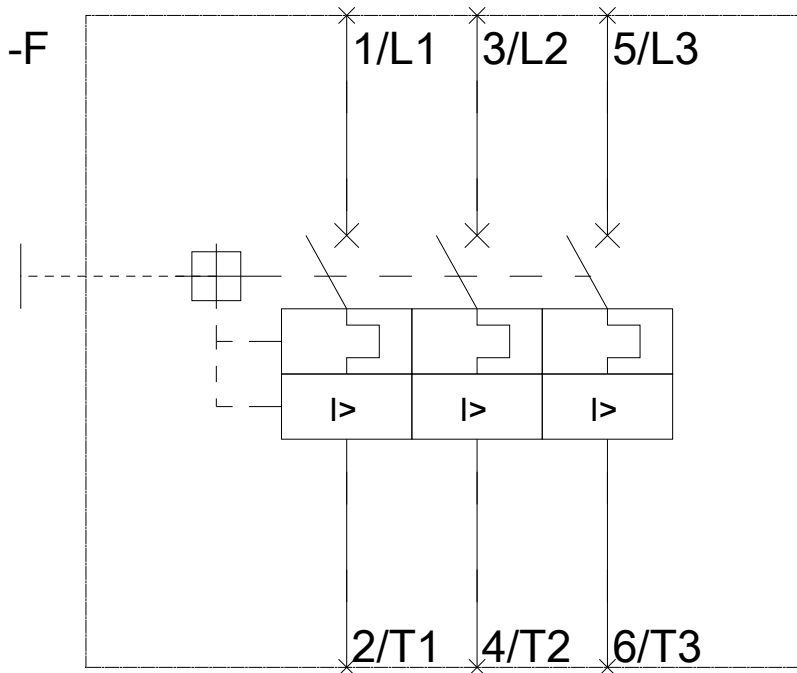
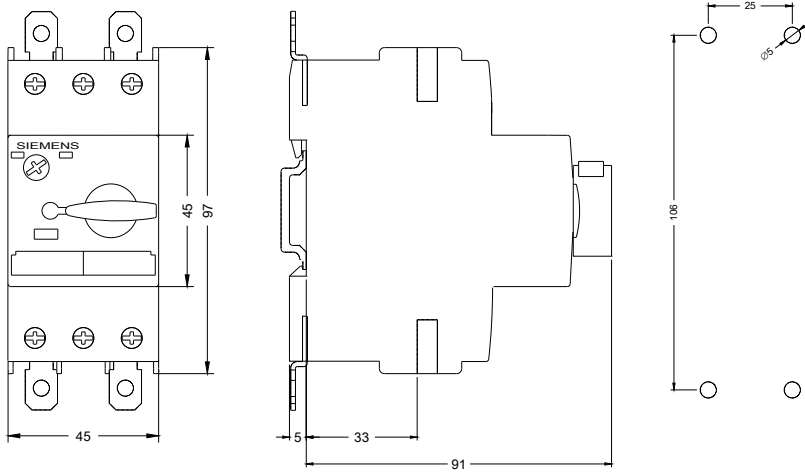
General Product Approval	For use in hazardous locations	Declaration of Conformity
 CCC	 EAC	 EG-Konf.
 CSA	 ATEX	
 UL		

Test Certificates	Shipping Approval
Special Test Certificate	 ABS
	 BUREAU VERITAS
	 DNV
	 GL
	 LRS

Shipping Approval	other
 RMRS	Declaration of Conformity
	Environmental Confirmations
	Confirmation
	 VDE
	other

Further information

- Information- and Downloadcenter (Catalogs, Brochures,...)
<http://www.siemens.com/industrial-controls/catalogs>
- Industry Mall (Online ordering system)
<http://www.siemens.com/industrymall>
- Cax online generator
<http://support.automation.siemens.com/WW/CAXorder/default.aspx?lang=en&mlfb=3RV10211BA10>
- Service&Support (Manuals, Certificates, Characteristics, FAQs,...)
<https://support.industry.siemens.com/cs/ww/en/ps/3RV10211BA10>
- Image database (product images, 2D dimension drawings, 3D models, device circuit diagrams, EPLAN macros, ...)
http://www.automation.siemens.com/bilddb/cax_de.aspx?mlfb=3RV10211BA10&lang=en



last modified:

27.04.2015