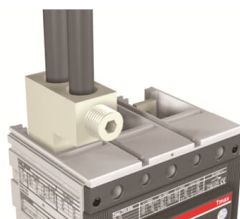




 PRODUCT-DETAILS

KIT FC CuAl 1x300mm2 T5 400 3pcs

KIT FC CuAl 1x300mm2 T5 400 3pcs



General Information

Extended Product Type	KIT FC CuAl 1x300mm2 T5 400 3pcs
Product ID	1SDA055024R1
EAN	8015644561697
Catalog Description	KIT FC CuAl 1x300mm2 T5 400 3pcs
Long Description	FRONT TERMINALS FOR CABLES IN COPPER-ALUMINIUM 1x300mm2 3pcs T5 400

Circular Value

Conflict Minerals Reporting Template (CMRT)	9AKK108467A5658
Toxic Substances Control Act - TSCA	9AKK108467A8326

Environmental

Environmental Information	9AKK108467A6707
REACH Declaration	9AKK108466A1425
RoHS Information	9AKK108466A1424

RoHS Status Following EU Directive 2011/65/EU and Amendment 2015/863 July 22, 2019

Ordering

Order Code US and Canada	KIA3400-3
EAN	8015644561697
Minimum Order Quantity	1 piece
Customs Tariff Number	85389099

Dimensions

Product Net Weight	0.2 kg
--------------------	--------

Container Information

Package Level 1 Units	1 piece
Package Level 1 Gross Weight	0.225 kg
Package Level 1 EAN	8015644561697

Additional Information

Configuration Type	Loose or configurable
Number of Poles	3
Product Main Type	Accessories for Tmax T
Product Name	Accessory
Product Type	Accessory
Standards	IEC
Suitable For	T5
Suitable for Product Class	SACE Tmax T

Certificates and Declarations

Data Sheet, Technical Information	1SDC210015D0208 1SDC210300D0201
Declaration of Conformity - CE	Refer to the EU Declaration of the relative Circuit Breaker
Instructions and Manuals	1SDH001408R0001

Classifications

ETIM 7	EC002019 - Connection vane/phase spreader
ETIM 8	EC002019 - Connection vane/phase spreader
ETIM 9	EC002019 - Connection vane/phase spreader
Object Classification Code	Q
UNSPSC	39120000
WEEE Category	5. Small Equipment (No External Dimension More Than 50 cm)
eClass	V11.1 : 27371305

Categories

Low Voltage Products and Systems → Circuit Breakers → Moulded Case Circuit Breakers → Accessories for Formula DSA

Low Voltage Products and Systems → Circuit Breakers → Moulded Case Circuit Breakers → Accessories for Tmax T

