

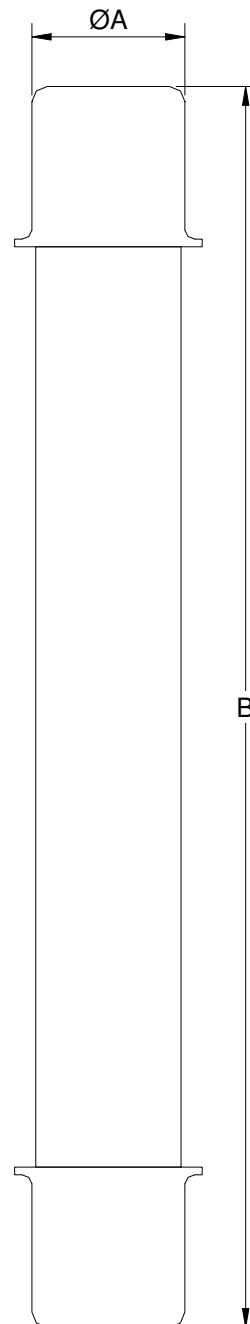
“ E ” RATED FUSE

Current Limiting power fuse type JTE high interrupting rating designs for substantial reduction of short circuit stresses. pure silver elements are designed to ensure fine tolerances of time x current.

POTENTIAL TRANSFORMER FUSES



| In (A) | Vn (kV) | REF | DIMENSIONS | | Ic (kA) | | |
|-----------|------------|--------------|---------------|----------------|------------|---------------|----------------|
| | | | A | B | | | |
| 3E | 0,625 | 3 JTE-A6 | 20,6 ,81" | 117,4 4,62" | 100 | | |
| 5E | | 5 JTE-A6 | | | | | |
| 1E | 2,75 | 1 JTE-A27 | | 127,0 5" | 60 | | |
| 2E | | 2 JTE-A27 | | | | | |
| 0,5E | | 0,5 JTE-AA27 | | | | | |
| 1E | | 1 JTE-AA27 | | | | | |
| 1,5E | | 1,5 JTE-AA27 | | | | | |
| 2E | | 2 JTE-AA27 | | | | | |
| 3E | | 3 JTE-AA27 | | | | | |
| 1E | | 5,5 | | 1 JTE-B27 | | 41,2 1,62" | 174,6 6,87" |
| 2E | | | 2 JTE-B27 | | | | |
| 3E | | | 3 JTE-B27 | | | | |
| 1E | 1 JTE-BA27 | | 41,2 1,62" | 241,3 9,5" | | | |
| 2E | 2 JTE-BA27 | | | | | | |
| 3E | 3 JTE-BA27 | | | | | | |
| 0,5E | 8,3 | 0,5 JTE-A55 | 20,6 ,81" | 127,0 5" | 30 | | |
| 1E | | 1 JTE-A55 | | | | | |
| 1,5E | | 1,5 JTE-A55 | | | | | |
| 2E | | 2 JTE-A55 | | | | | |
| 0,5E | 5,5 | 0,5 JTE-B55 | 41,2 1,62" | 187,3 7,37" | 80 | | |
| 1E | | 1 JTE-B55 | | | | | |
| 2E | | 2 JTE-B55 | | | | | |
| 3E | | 3 JTE-B55 | | | | | |
| 0,5E | | 8,3 | 0,5 JTE-BA55 | 41,2 1,62" | | 241,3 9,5" | 80 |
| 1E | | | 1 JTE-BA55 | | | | |
| 2E | 2 JTE-BA55 | | | | | | |
| 3E | 3 JTE-BA55 | | | | | | |
| 0,5E | 5,5 | 0,5 JTE-A83 | 20,6 ,81" | 190,5 7,5" | 40 | | |
| 1E | | 1 JTE-A83 | | | | | |
| 1,5E | | 1,5 JTE-A83 | | | | | |
| 2E | | 2 JTE-A83 | | | | | |
| 3E | | 3 JTE-A83 | | | | | |
| 0,5E | | 8,3 | 0,5 JTE-B83 | 41,2 1,62" | | 241,3 9,5" | 80 |
| 1E | 1 JTE-B83 | | | | | | |
| 2E | 2 JTE-B83 | | | | | | |
| 3E | 3 JTE-B83 | | | | | | |



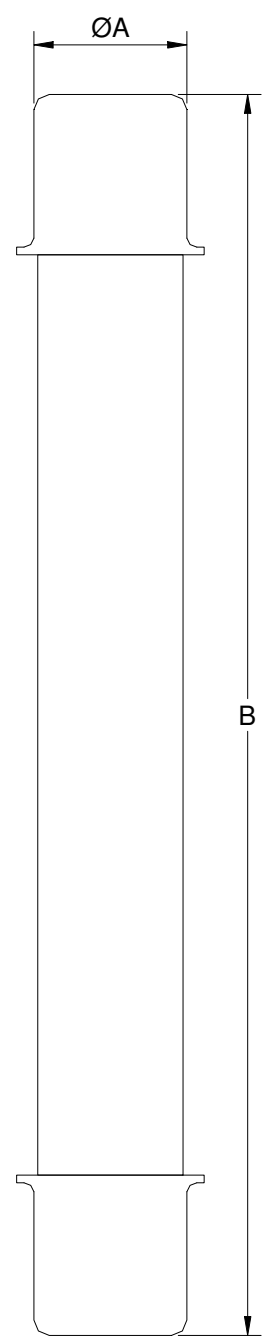


“ E ” RATED FUSE

POTENTIAL TRANSFORMER FUSES



| In (A) | Vn (kV) | REF | DIMENSIONS | | Ic (kA) |
|-----------|------------|--------------|---------------|-----------------|------------|
| | | | A | B | |
| 0,3E | 15,5 | 0,3 JTE-A15 | 20,6 ,81" | 254,0 | 30 |
| 0,5E | | 0,5 JTE-A15 | | 10" | |
| 1E | | 1 JTE-AA15 | | 340,0 | |
| 1,5E | | 1,5 JTE-AA15 | | 13,37" | |
| 0,5E | 15,5 | 0,5 JTE-B15 | 41,2 1,62" | 327,0 12,87" | 80 |
| 1E | | 1 JTE-B15 | | | |
| 2E | | 2 JTE-B15 | | | |
| 3E | | 3 JTE-B15 | | | |
| 0,3E | 25,5 | 0,3 JTE-A25 | 20,6 ,81" | 340,0 13,37" | 30 |
| 0,5E | | 0,5 JTE-A25 | | | |



“ E ” RATED FUSE

Current Limiting power fuse type JTE high interrupting rating disigns for substantial reduction of short circuit stresses. pure silver elements are designed to ensure fine tolerances of time x current.



POTENTIAL TRANSFORMER FUSES

| In (A) | Vn (kV) | REF | DIMENSIONS | | Ic (kA) |
|-----------|------------|--------------|-------------|----------------|------------|
| | | | A | B | |
| 0,5E | 2,75 | 0,5 JTE-AB27 | 25 0,98" | 196,0 7,71" | 80 |
| 1E | | 1 JTE-AB27 | | | |
| 1,5E | | 1,5 JTE-AB27 | | | |
| 2E | | 2 JTE-AB27 | | | |
| 3E | | 3 JTE-AB27 | | | |
| 5E | | 5 JTE-AB27 | | | |
| 0,5E | 5,5 | 0,5 JTE-AB55 | 25 0,98" | 196,0 7,71" | |
| 1E | | 1 JTE-AB55 | | | |
| 1,5E | | 1,5 JTE-AB55 | | | |
| 2E | | 2 JTE-AB55 | | | |
| 3E | | 3 JTE-AB55 | | | |
| 5E | | 5 JTE-AB55 | | | |

| In (A) | Vn (kV) | REF | DIMENSIONS | | Ic (kA) |
|-----------|------------|-------------|-------------|----------------|------------|
| | | | A | B | |
| 0,5E | 5,5 | 0,5 JTE-C55 | 27 1,06" | 230,0 9,05" | 63 |
| 1E | | 1 JTE-C55 | | | |
| 1,5E | | 1,5 JTE-C55 | | | |
| 2E | | 2 JTE-C55 | | | |
| 0,5E | 15,5 | 0,5 JTE-C15 | 27 1,06" | 230,0 9,05" | |
| 1E | | 1 JTE-C15 | | | |
| 1,5E | | 1,5 JTE-C15 | | | |



“ E ” RATED FUSE

POTENTIAL TRANSFORMER FUSES

